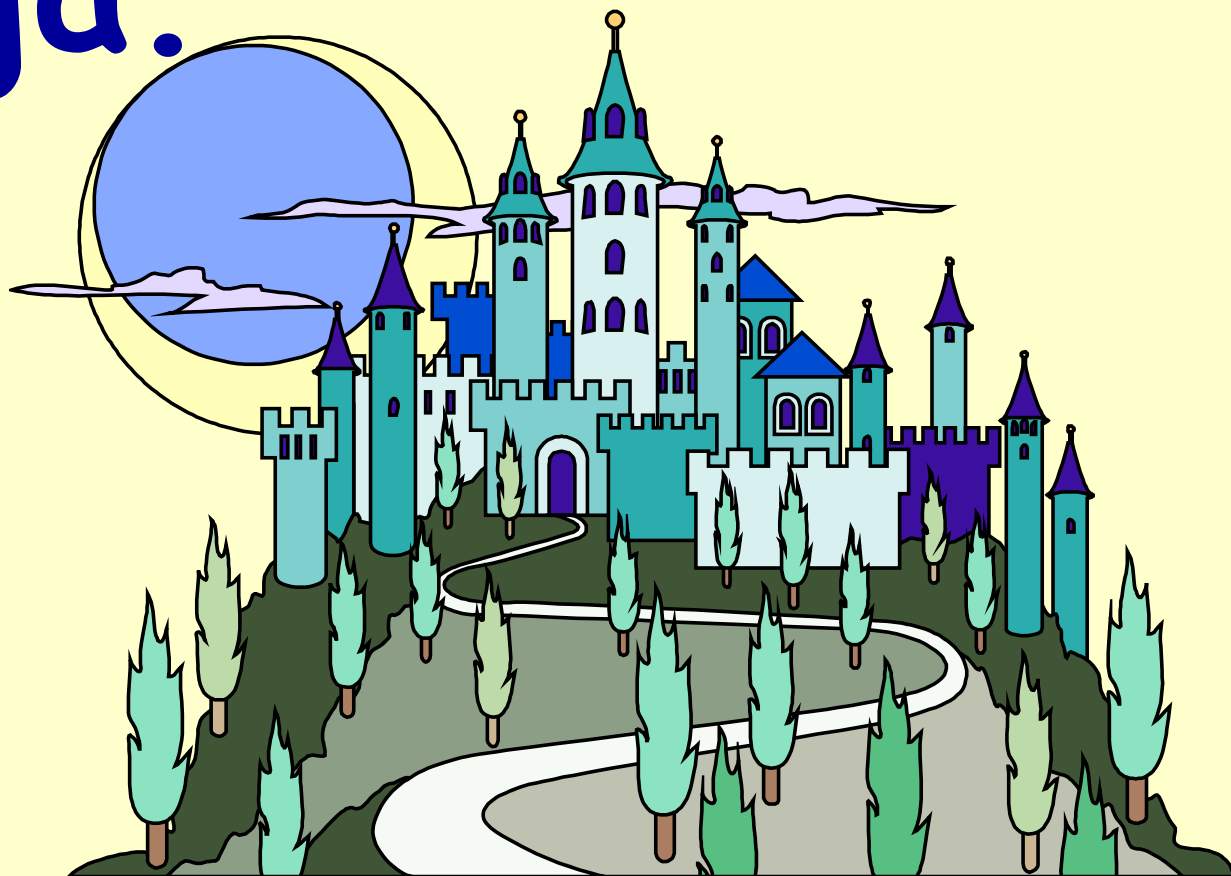
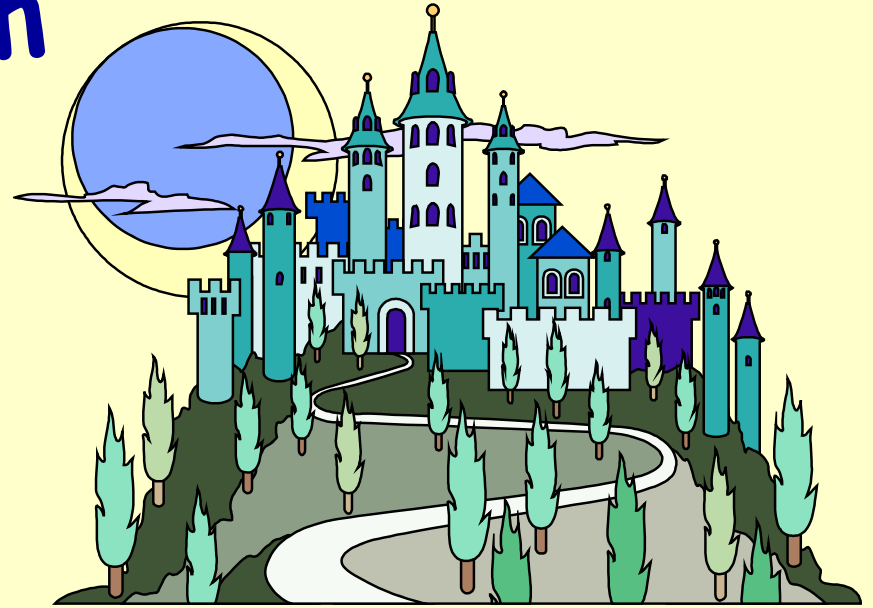


Il-kastell ta' fuq
l-għolja.



Darba kien hemm
kastell **sabiħ** .



Imma f'dan il-
kastell kien jgħix
mostru **ikrah** .



Toni tifel,
oñxon

u Rita, tifla
rqiqqa,

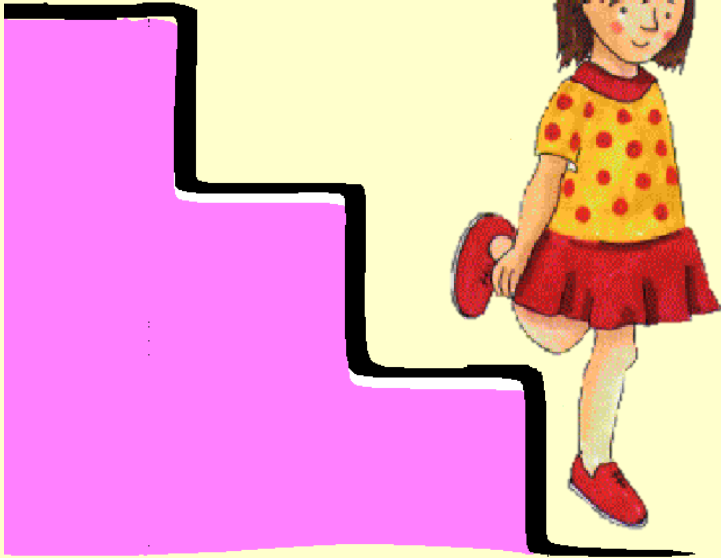
marru fil-kastell.





Kien hemm taraġ.

Toni tela' fuq.



Imma Rita
nizlet isfel .

Marru jfittxu
xi ħaġa.

Toni ra bieb kbir
li kellu pum žgħir.



Toni kien quddiem
il-bieb u ma kienx jaf
li kien hemm il-mostru
wara l-bieb.

Rita bdiet tħoss
il- **bard** .

Isfel ma kien
hemm xejn.



Kien hemm biss ħafna dlam.

Marret fuq għas-**sħana**
ħdejn Toni.



Toni fetaħ il-bieb.



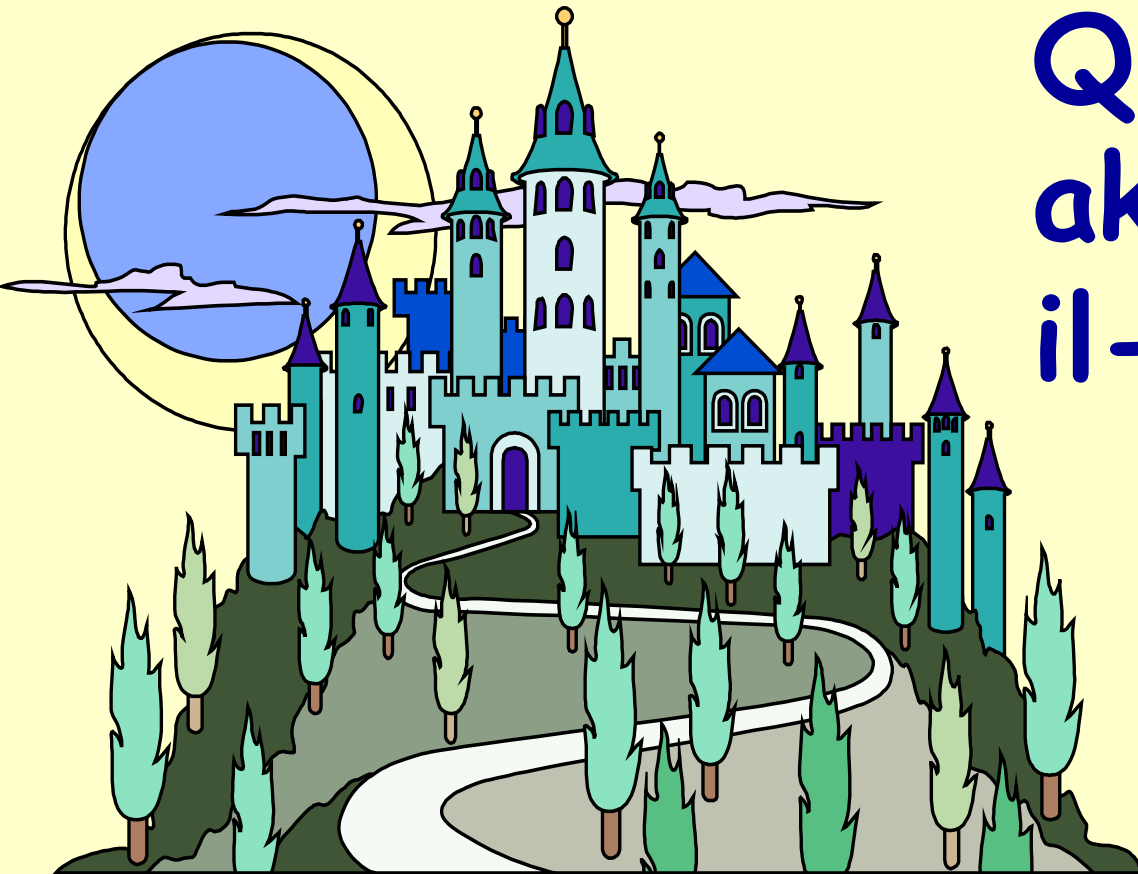
Il-mostru
kien qasir .

Imma kellu denbu twil .



Ma, x'biza'! Rita
igri, haffef,
qabel jaqbadna.

Tajjeb jew ħazin Toni u
Rita ħarbu.



Qatt ma resqu
aktar lejn dak
il-kastell.



Fuq karta jew pitazz, nizzel l-
opposti kollha li tiftakar mill-
istorja li għadek kif grajt.
Hemm 8 b'kollox!

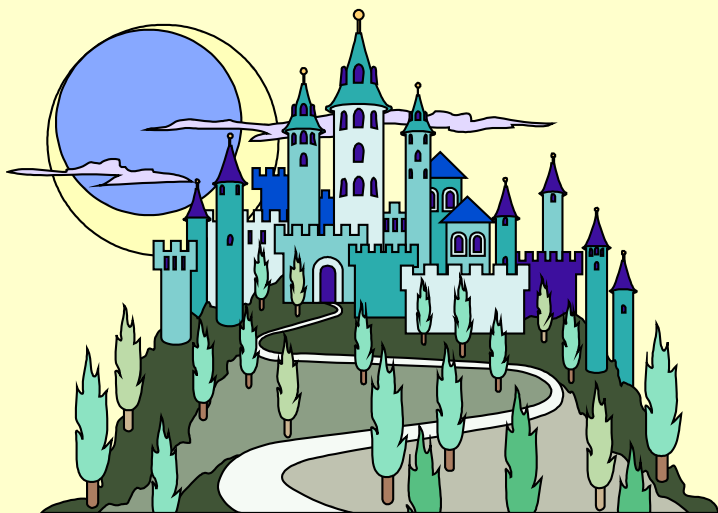
Irnexxielek?

Ha naraw liema kienu.



Immarka dawk li
rnexxielek tiftakar u žid
dawk li nsejt.

sabiñ



ikrah



oʻxon



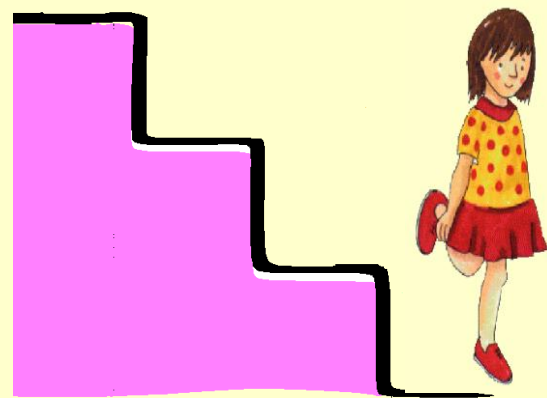
irqiqa



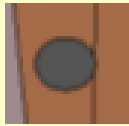
fuq



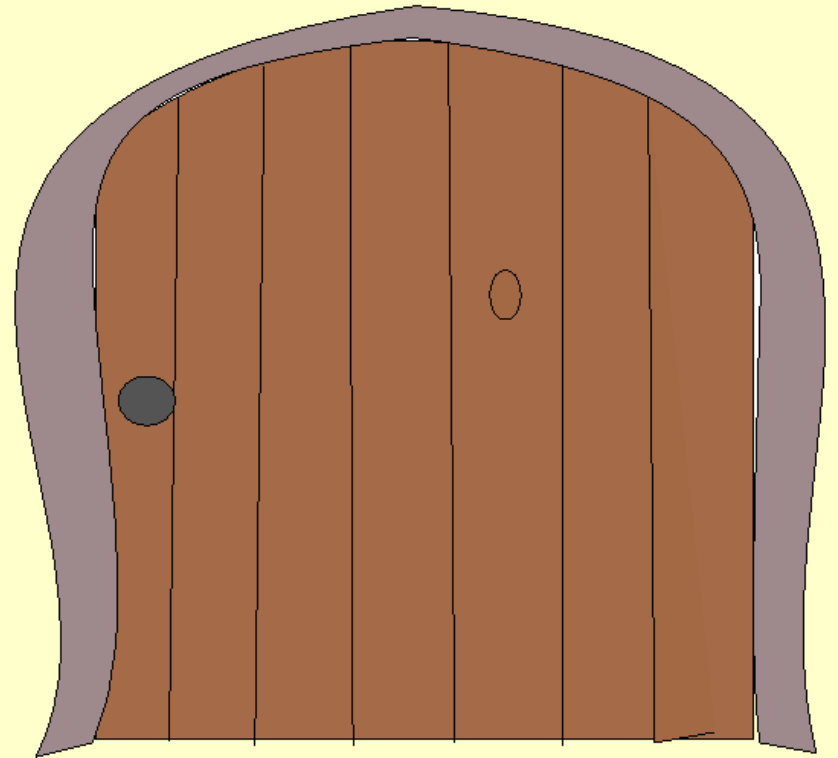
isfel



zghir

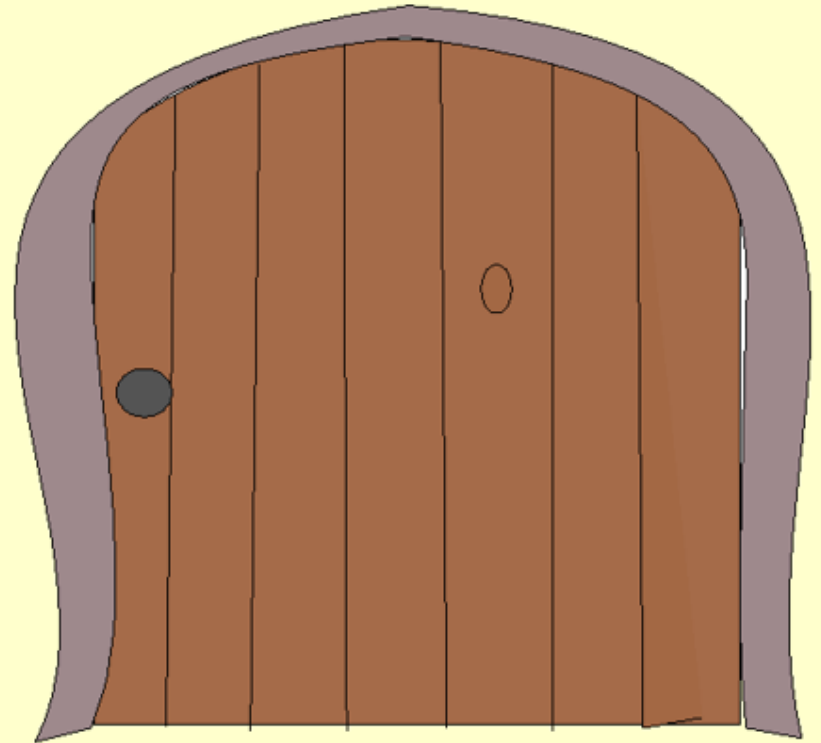
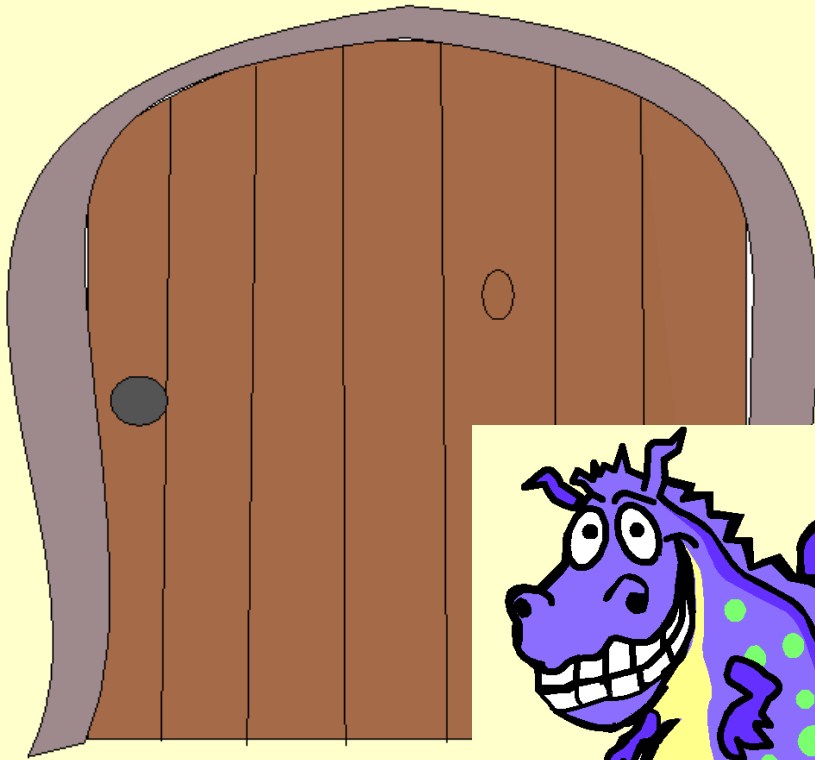


kbir

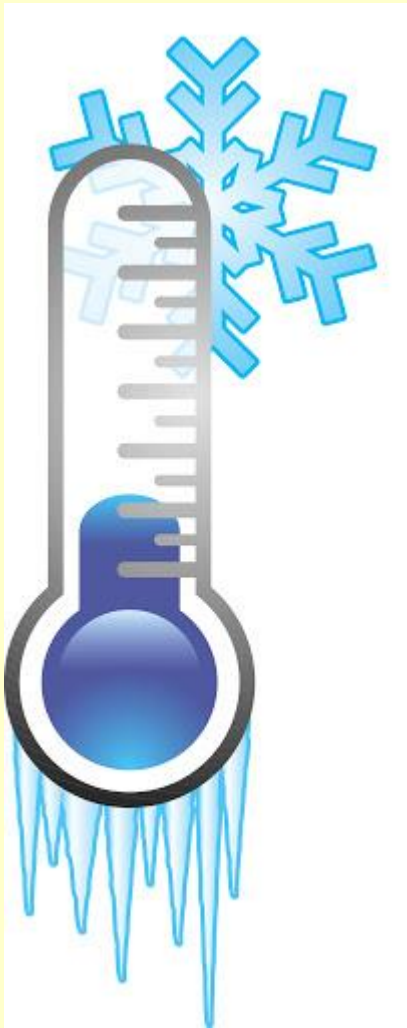


quddiem

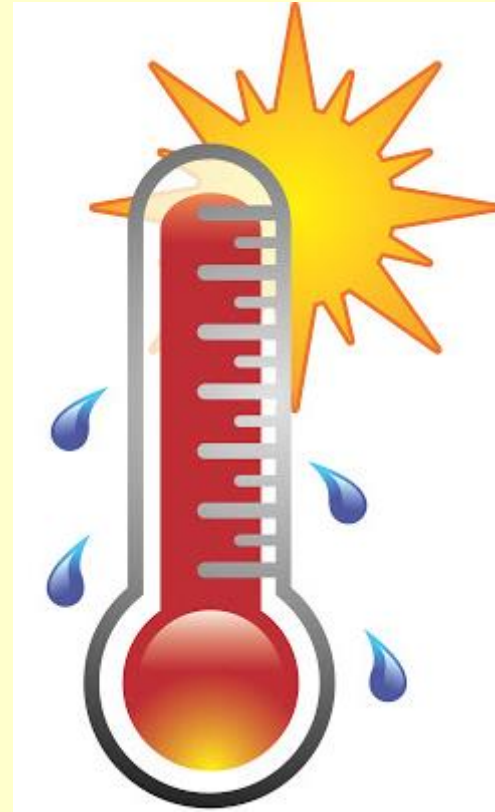
wara



bard



shana



qasir



twil



tajjeb



ħażin





Prosit!

**Issa ara dawn li gejjin.
Iktibhom fuq il-kart jew
il-pitazz.**

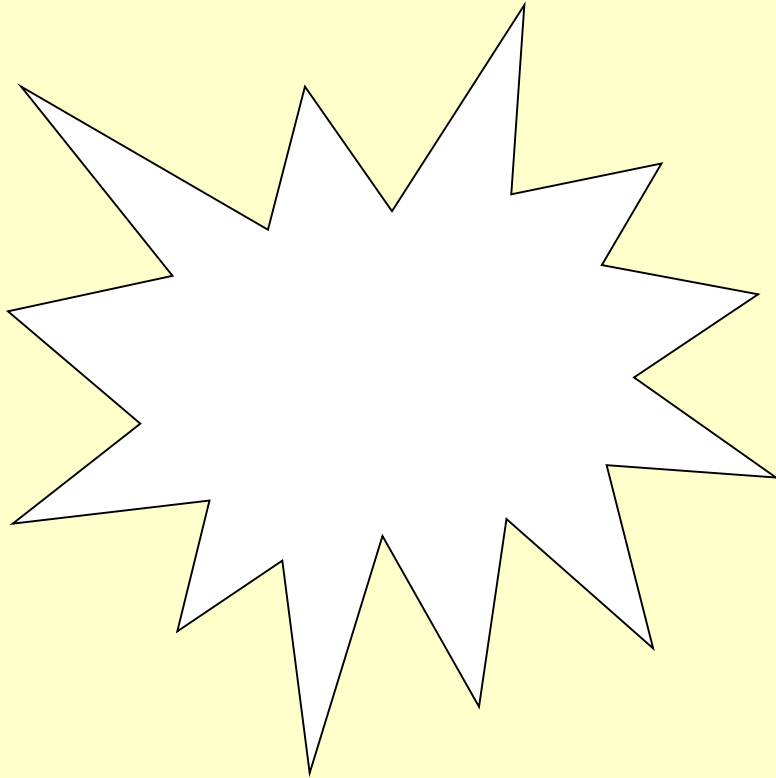
ftit



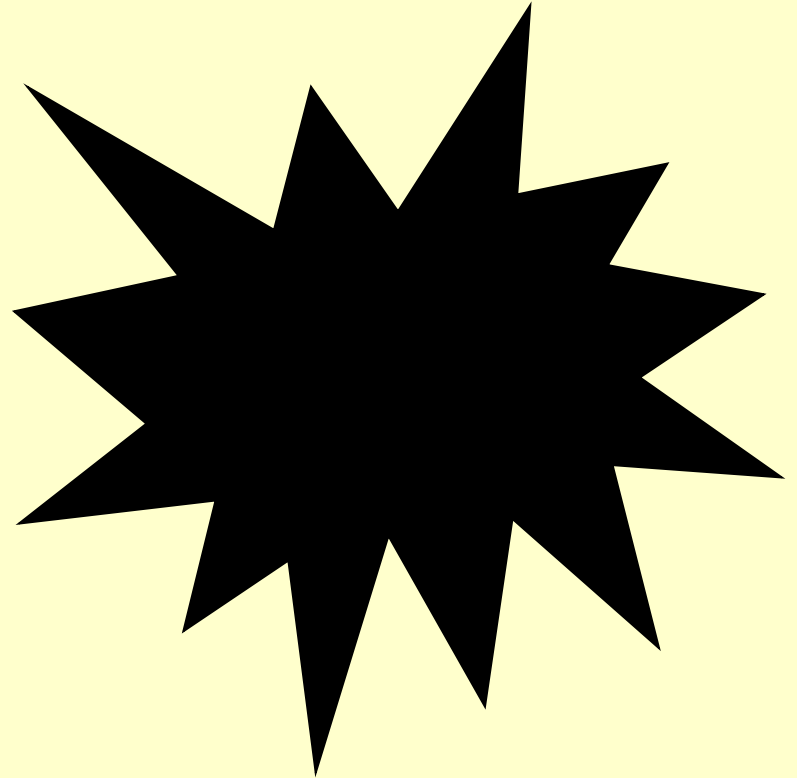
ħafna



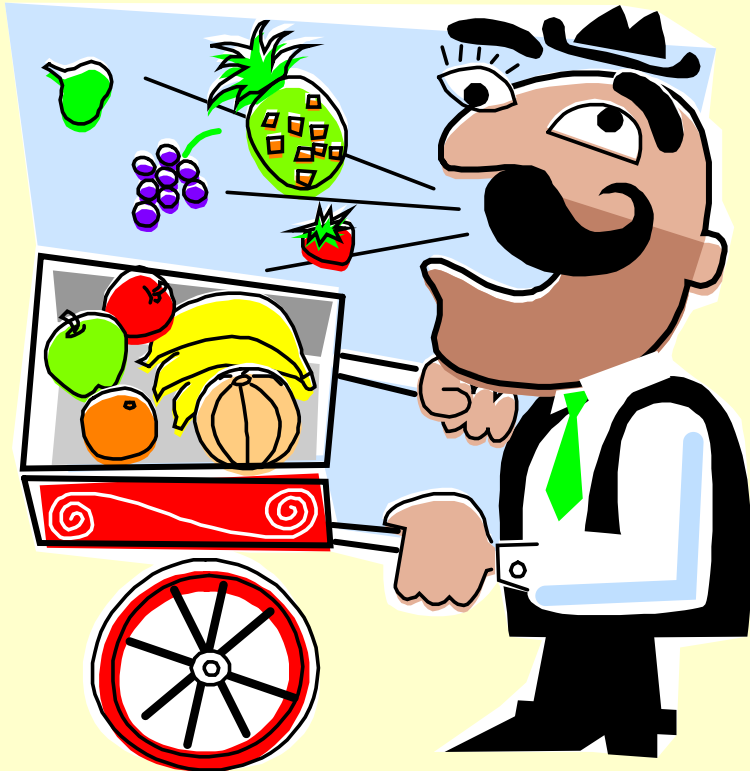
abjad



iswed



ibigh



jixtri



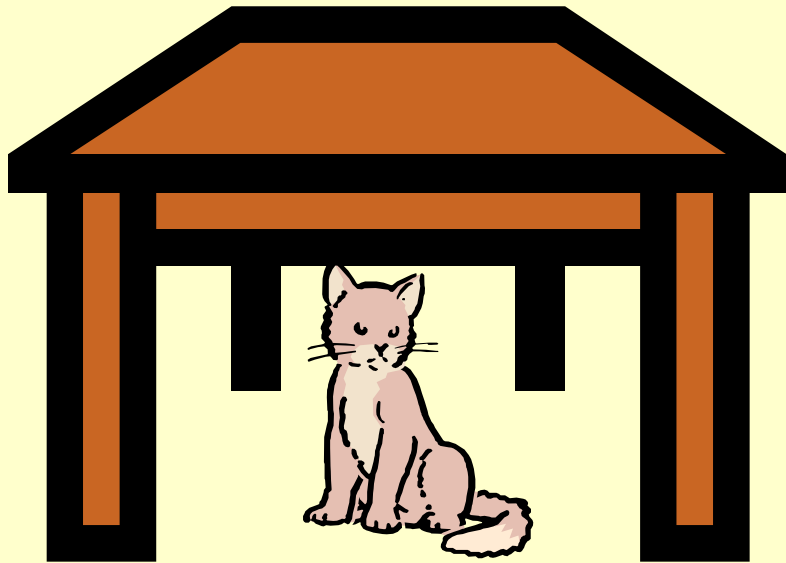
dawl



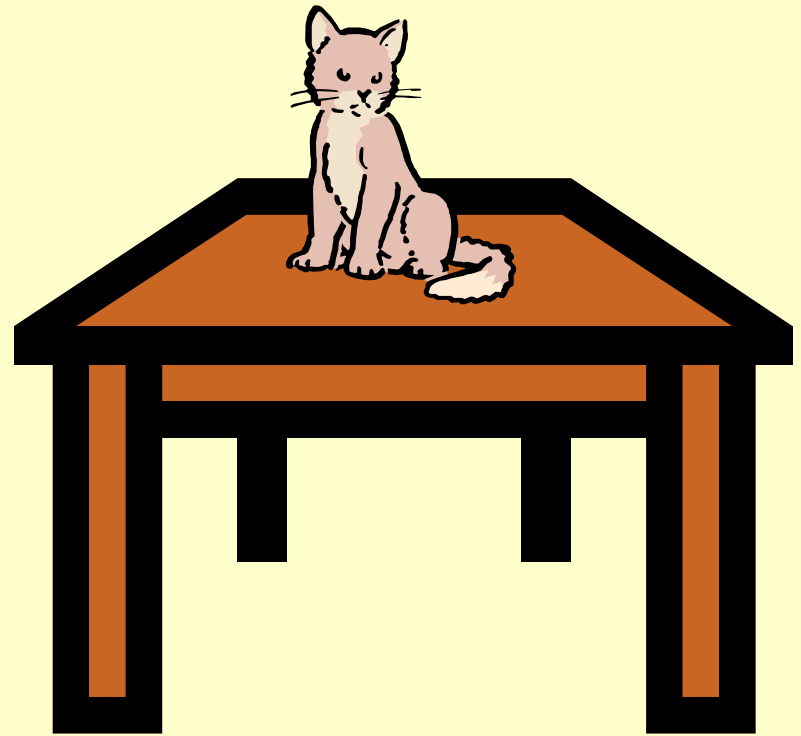
dlam



taht

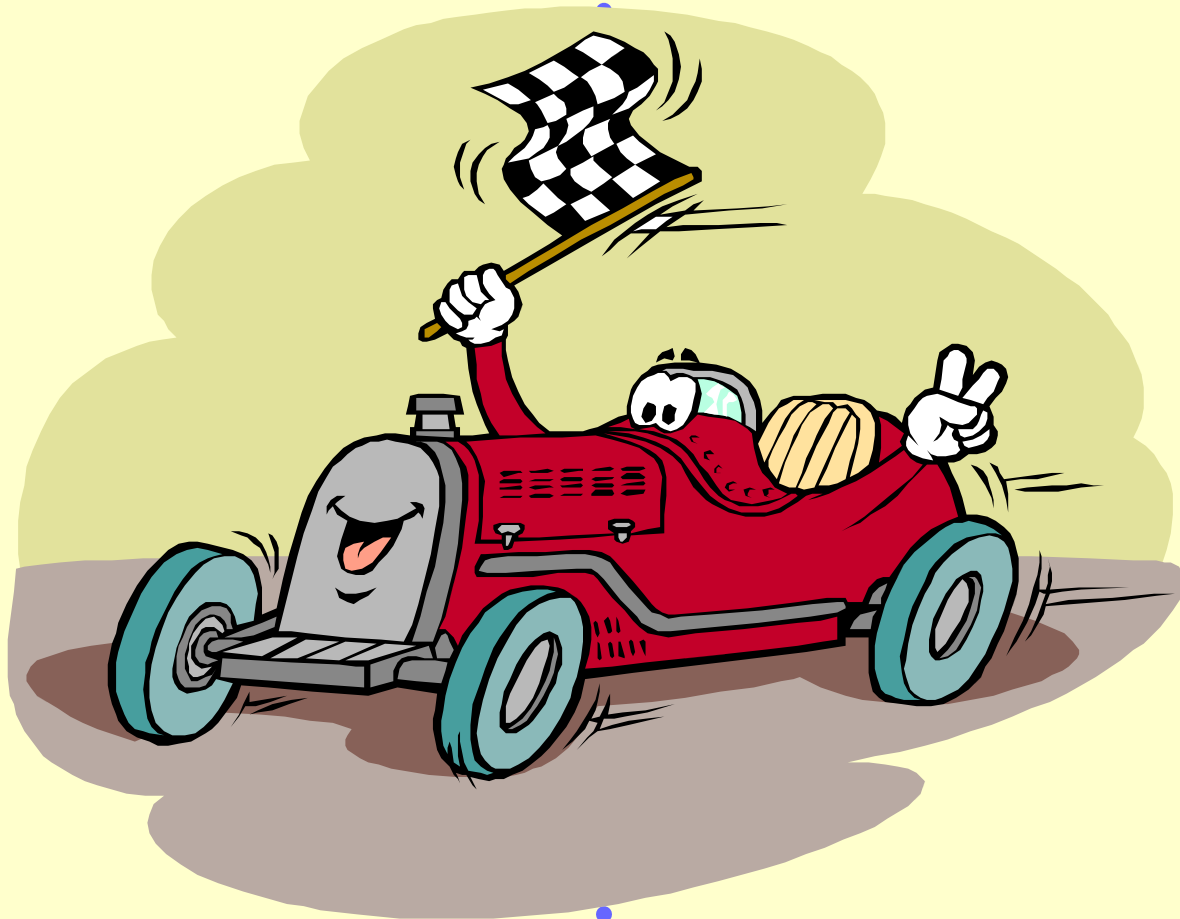


fuq

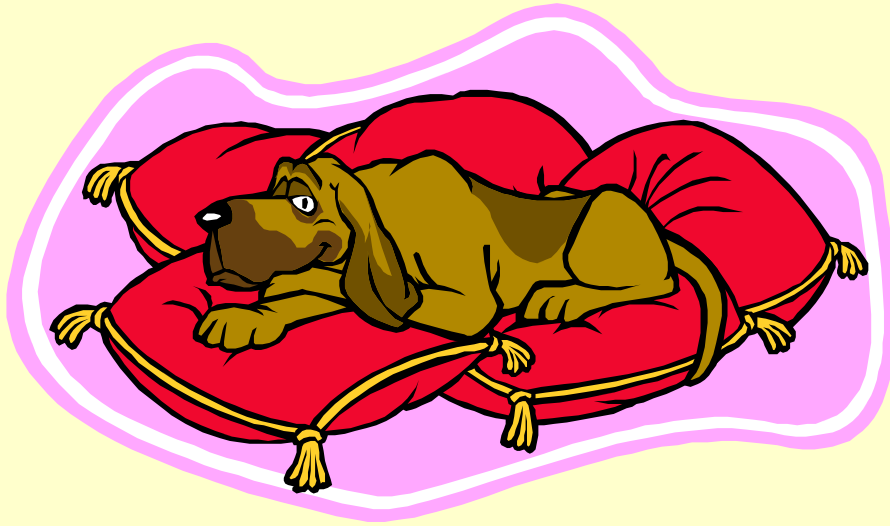


I-ewwel

I-aħħar



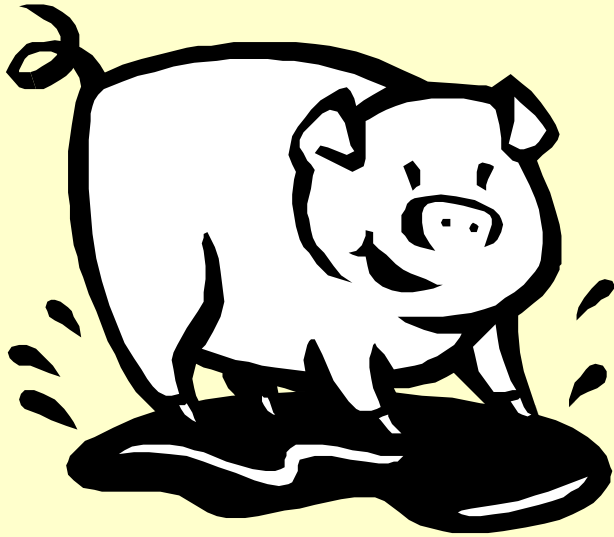
raqad



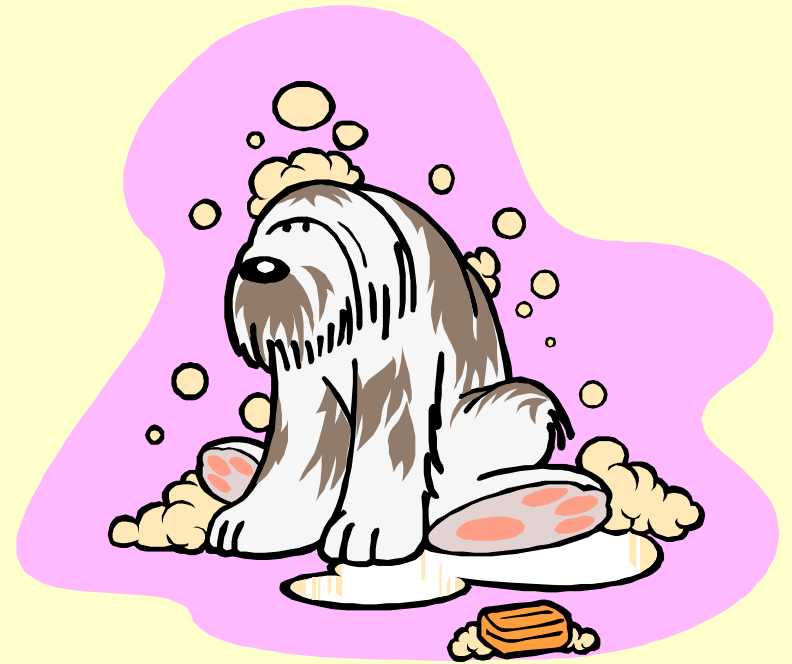
qam



maħmuġ



nadif



ħafifa



tqila



sinjur



fqir



vojt



mimli



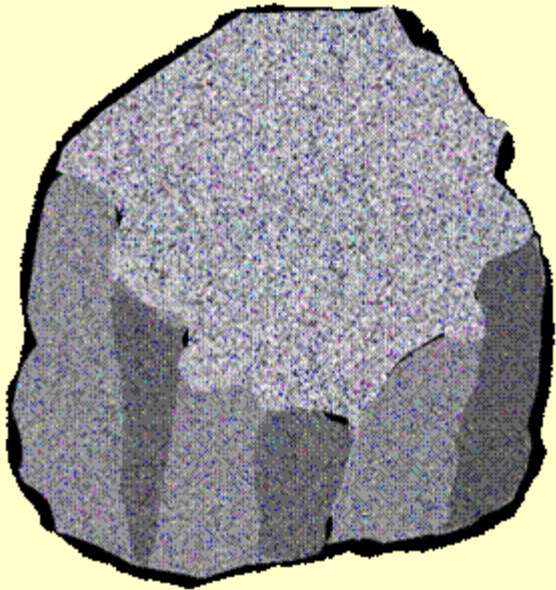
kwiet



storbju



iebsa



ratba



bieżel



għazzien



irthis



ghali



innocenti



hasti



pulit



zmattat



ħbieb



għedewwa



umli



kburi





Prosit tassew! Jekk
tiftakar xi oħrajn
kompli nizzilhom mal-
lista fuq il-karta jew
il-pitazz.

